

Rail T-Mounting Clamps

Aluminum, Splittable

SPECIFICATION

Types

- Type **A**: With bore
- Type **W**: With bolt

Mounting clamp

Aluminum

- Matte finish, tumbled **MT**
- Anodized, black **ELS**

Bolt for type W

Stainless steel AISI 303

Socket cap screws ISO 4762

Stainless steel

Dowel pin ISO 2338

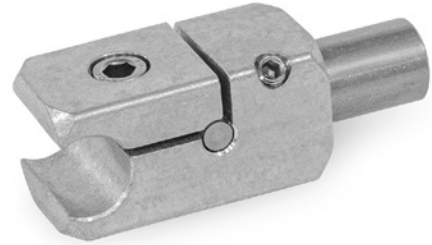
Stainless steel

Grub screw DIN 913 for type A

Stainless steel

Grub screw DIN 915 for type W

Stainless steel



INFORMATION

Rail T-mounting clamps GN 476.2 connect tubes and rods in a T shape. They are used for applications such as side guides, where the mounting clamps must not protrude to the side.

In addition, the split clamping point permits subsequent insertion of the mounting clamp into an existing structure and simplifies installation when axial insertion is not possible, such as due to curves.

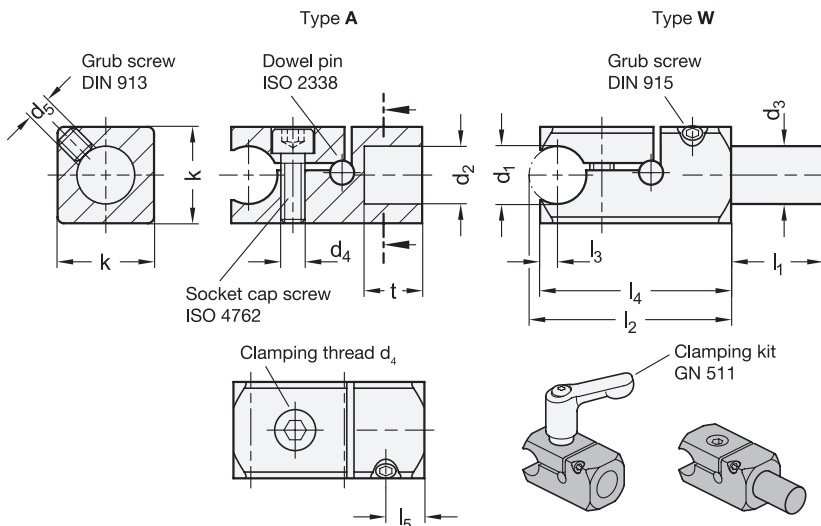
By combining one mounting clamp of type W and one of type A, two tubes or rods can be connected together at any adjustable angle. The standard clamping screw is a socket cap screw with hexagonal socket ISO 4762. It can be replaced by a clamping kit GN 511 (see page 1893) (for article code, see table of dimensions).

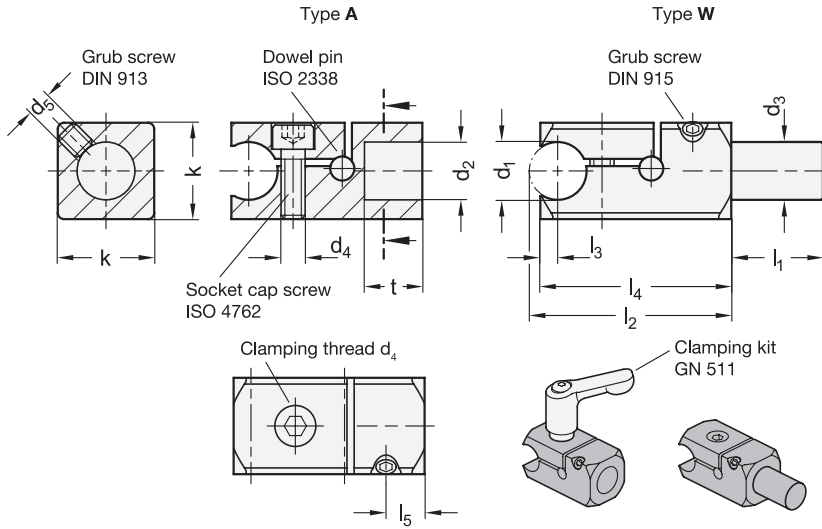
ACCESSORY

- GN 511 Clamping Kits (see page 1893)
- GN 480.1 Retaining Rods / Retaining Tubes (see page 1904)

TECHNICAL INFORMATION

- ISO-Fundamental Tolerances (see page A21)
- Stainless Steel Characteristics (see page A26)





*Complete with

MT **ELS**
Matte finish Anodized, black

GN 476.2-A

Description	d1 Bore for shaft tolerance h11	d2	d4 Clamping thread	d5	k	l2	l3	l4	l5	t	Clamping kit for d4	⚖
GN 476.2-B8-B8-A-*	B 8	B 8	M 4	M 4	16	32	2.5	30.5	5.5	8	GN 511-M4-16	20
GN 476.2-B10-B10-A-*	B 10	B 10	M 5	M 5	20	38	3.1	36.1	7	10	GN 511-M5-20	36
GN 476.2-B12-B12-A-*	B 12	B 12	M 5	M 5	20	42	3.6	39.6	8	12	GN 511-M5-20	42
GN 476.2-B15-B15-A-*	B 15	B 15	M 6	M 6	25	52	4.4	48.9	10	15	GN 511-M6-25	70
GN 476.2-B16-B16-A-*	B 16	B 16	M 6	M 6	25	55	4.8	51.8	11	16	GN 511-M6-25	72
GN 476.2-B20-B20-A-*	B 20	B 20	M 6	M 6	30	63	6	59	12	18	GN 511-M6-30	111

GN 476.2-W

Description	d1 Bore for shaft tolerance h11	d3	d4 Clamping thread	d5	k	l1	l2	l3	l4	l5	Clamping kit for d4	⚖
GN 476.2-B8-8-W-*	B 8	8	M 4	M 4	16	16	32	2.5	30.5	5.5	GN 511-M4-16	29
GN 476.2-B10-10-W-*	B 10	10	M 5	M 5	20	17	38	3.1	36.1	7	GN 511-M5-20	53
GN 476.2-B12-12-W-*	B 12	12	M 5	M 5	20	19	42	3.6	39.6	8	GN 511-M5-20	64
GN 476.2-B15-15-W-*	B 15	15	M 6	M 6	25	21	52	4.4	48.9	10	GN 511-M6-25	119
GN 476.2-B16-16-W-*	B 16	16	M 6	M 6	25	24	55	4.8	51.8	11	GN 511-M6-25	134
GN 476.2-B20-20-W-*	B 20	20	M 6	M 6	30	26	63	6	59	12	GN 511-M6-30	219

Weight MT

